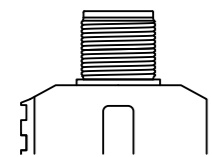
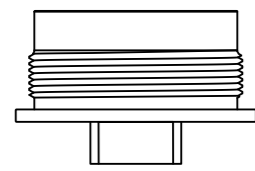


MOUNTING OPTIONS FOR: SUB9 & HUB/UNIVERSAL 9MM RATED SUPPRESSORS

UNIVERSAL DIRECT THREAD MOUNT

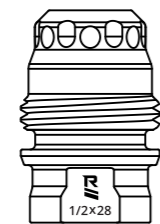
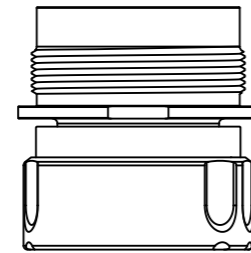
(DIRECT THREAD)
SKU: DTM002*



FIREARM THREADS

RUGGED UNIVERSAL MOUNT

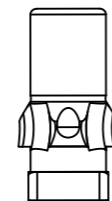
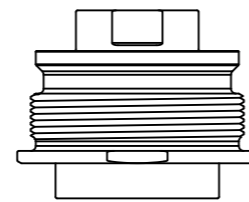
(DUAL TAPER SYSTEM¹
QUICK DETACH)
SKU: RUM002 / RUM001



M2 BRAKE
SKU: MB014*

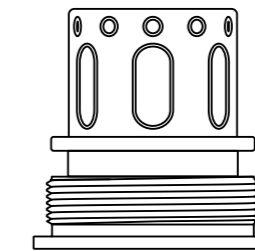
RUGGED UNIVERSAL 3 LUG MOUNT

(3 LUG SYSTEM²
QUICK DETACH)
SKU: RU3

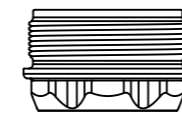


9MM 3 LUG ADAPTER
(HK SPEC 3 LUG)
SKU: OA003*

UNIVERSAL CAGE (THREAD ADAPTER FOR OBSIDIAN MOUNTS) SKU: CAGE002



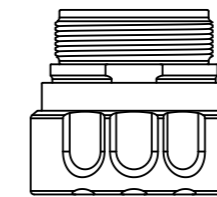
FIXED MOUNT
(DIRECT THREAD)
SKU: OF001



FIREARM
THREADS



OBSIDIAN DUAL
TAPER MOUNT
(DUAL TAPER SYSTEM¹
QUICK DETACH)
SKU: ODTM001



M2 BRAKE
SKU: MB014*



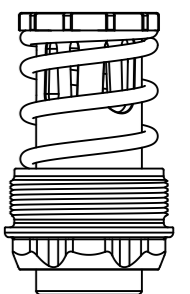
3 LUG MOUNT
(3 LUG SYSTEM²
QUICK DETACH)
SKU: OA001



9MM 3 LUG ADAPTER
(HK SPEC 3 LUG)
SKU: OA003*



BOOSTER SYSTEM³
(PISTON+SPRING+RETAINER)
(USED FOR HANDGUNS)
SKU: OP002*



HANDGUN
THREADS

THE MOST COMMON THREAD PITCH SKU WAS CHOSEN FOR ACCESSORIES THAT HAVE MULTIPLE THREAD PITCH OPTIONS.

¹ DUAL TAPER SYSTEM - PRIMARY QUICK DETACH SYSTEM FOR RIFLE SUPPRESSORS. HOWEVER, THE M2 BRAKE IS COMPATIBLE WITH SUBGUN/LEVERGUN CALIBERS UP TO A .360 DIAMETER PROJECTILE (9MM, .357 MAG, 300BLK ETC.) MAKING IT AN OPTION FOR THE SUB9.

² 3 LUG SYSTEM - MOST COMMON QUICK DETACH OPTION FOR PCC/SUBGUNS/LEVERGUNS

³ BOOSTER SYSTEM - A BOOSTER SYSTEM IS THE REQUIRED MOUNTING OPTION FOR USE WITH A HANDGUN. THE BOOSTER SYSTEM ALLOWS THE HANDGUN TO PROPERLY CYCLE, BUT SHOULD NOT BE USED WITH A SUBGUN/PCC/LEVERGUN.